

ASUSTeK COMPUTER INC.	P505 SERVICE GUIDE	Doc. No:	
		Date: DEC.02, 2004	
		Revision: 1	
		Page:	Grade:

Rev.	Modification	Modify description	Issue div.	Originator
		FIRST RELEASE	RMA-TC	P. P_PAM

Authorize by		Review by		Originator by	
-------------------------	--	----------------------	--	--------------------------	--

DISASSEMBLE TOOL:



P505X1



SCREWDRIVERX1

ASUS P505 DISASSEMBLE PROCEDURE-

STEPS 1: push the battery lock to right



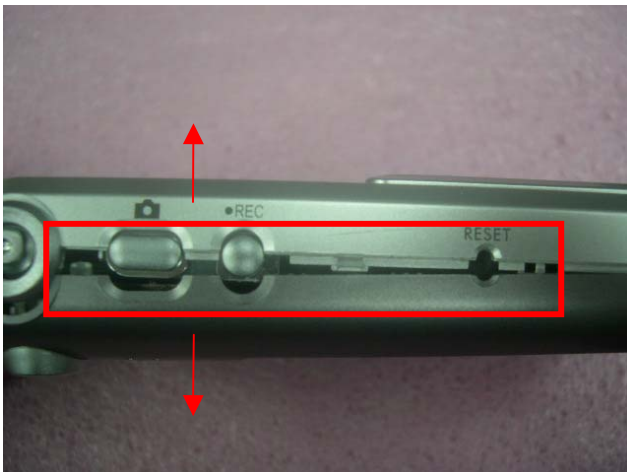
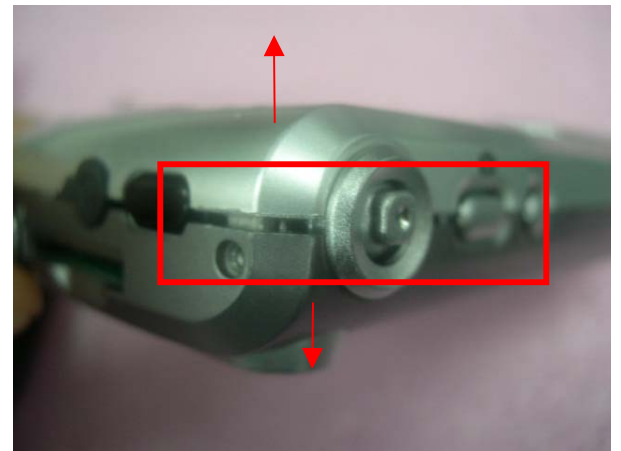
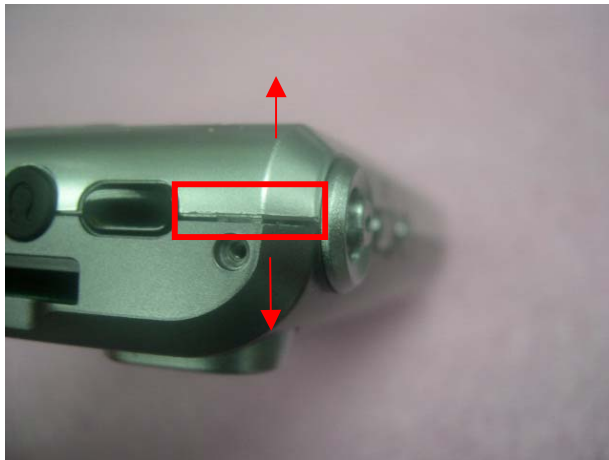
STEPS 2: pull down the bolt and pick up battery



STEPS 3:unload the screw in back cover and the Top of P505



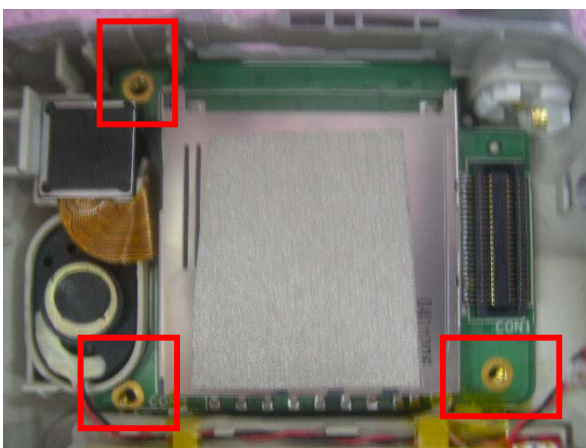
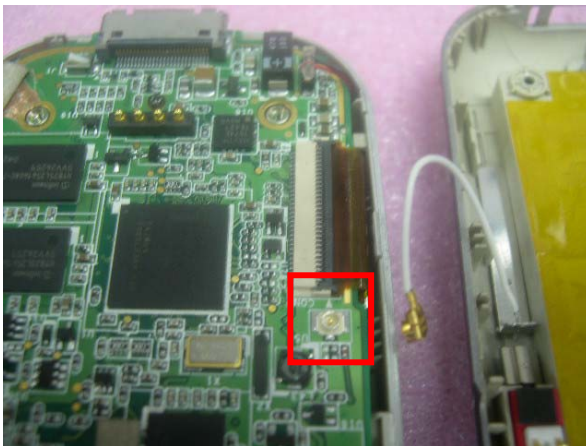
STEPS 4:To pull open the plastics case by tool
Notice: do not scrape the lacquer



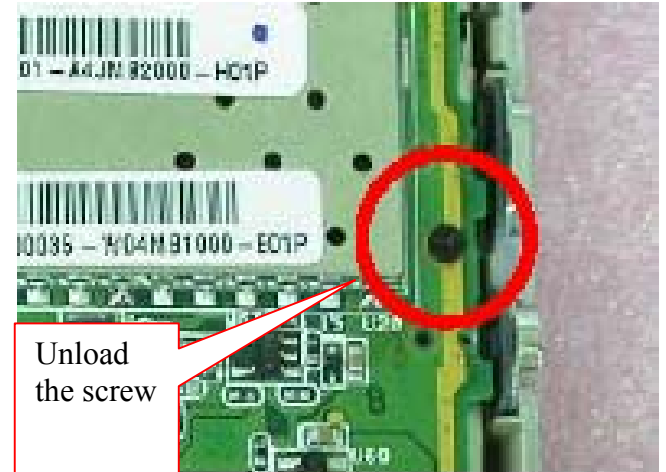
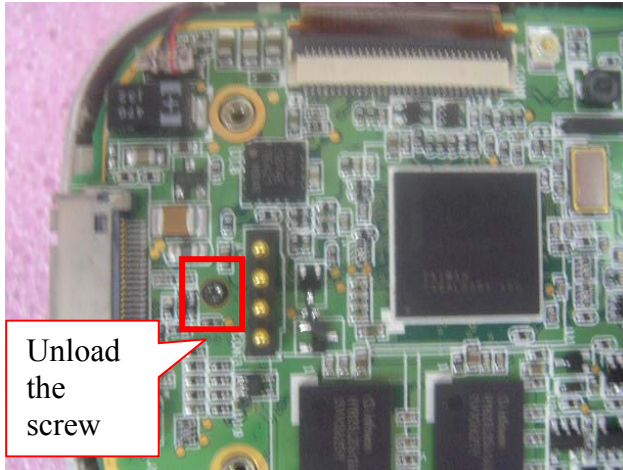
STEPS 5: From another side to open by tool



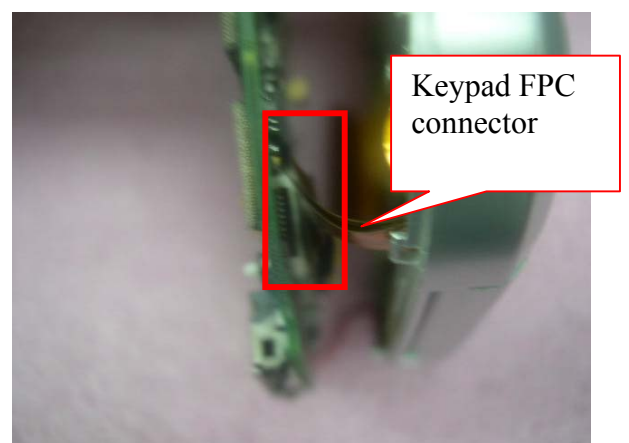
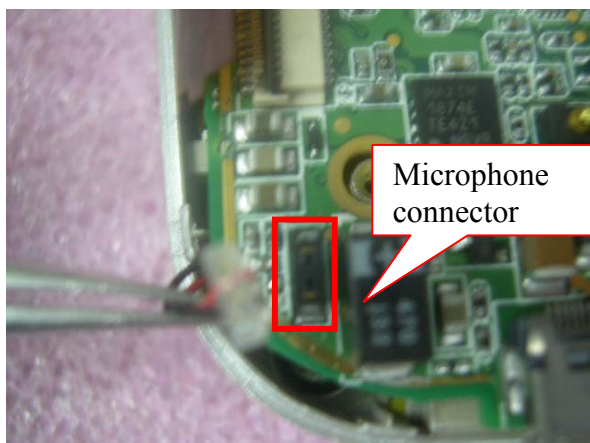
- STEPS 6: 1. Remove the lines of BT then make button case and MAIN_BD separate.
2. Unload the 3 screws from SD_BD and pull up.
3. Then take camera module from SD_BD.

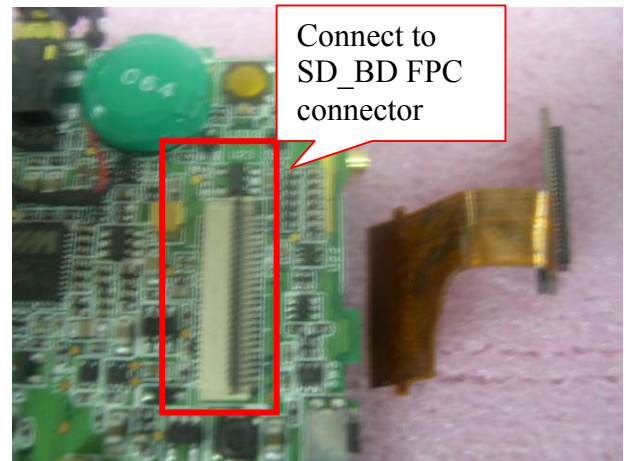
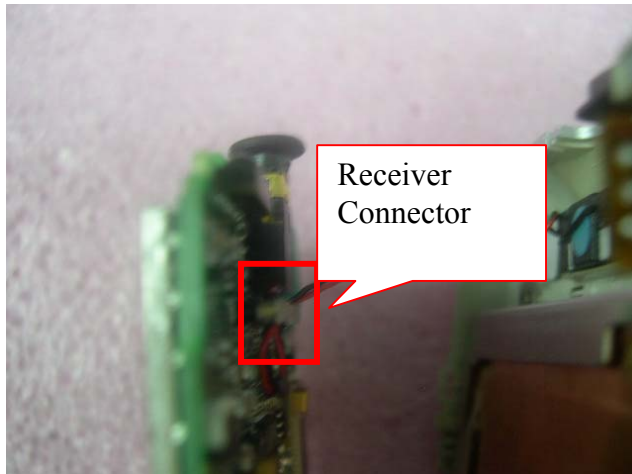


Steps7: Unload the screw from MAIN_BD and remove LCD_FPC.



Steps 8:1. Pull up MICROPHONE connector.
2. Separate keypad FPC connector and receiver connector.
3. Unload the SD_FPC connect to the MAIN_BD.

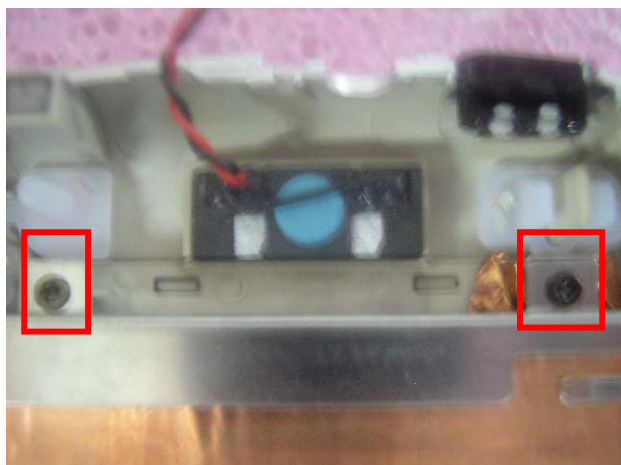


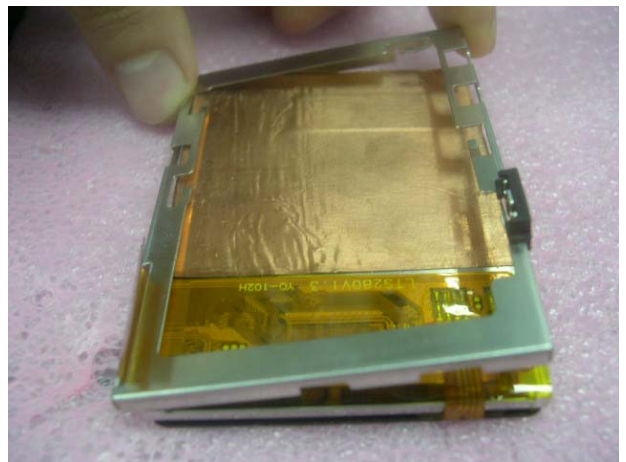
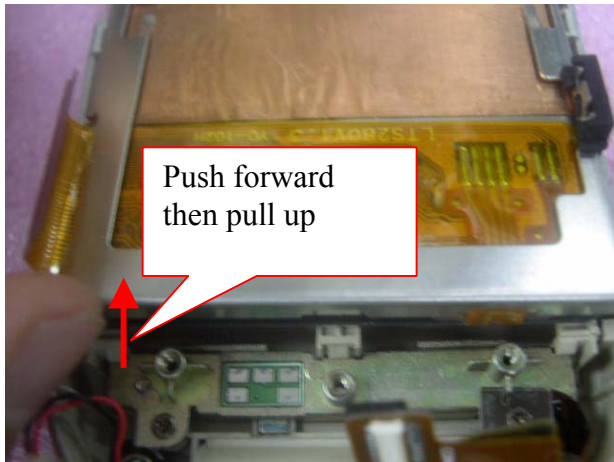


Steps 9: Pick up cursor key



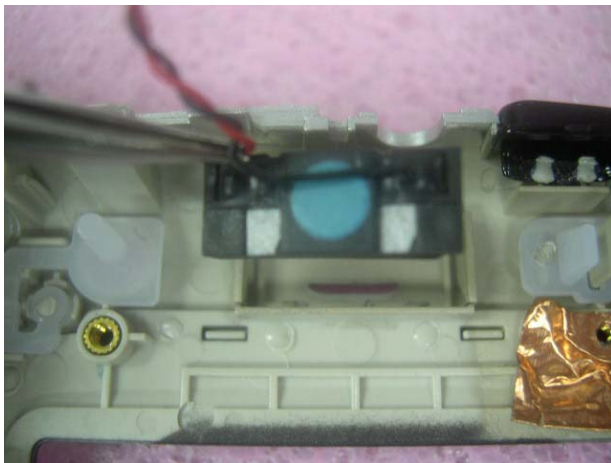
Steps 10: 1. Unload 2 screws from LCD and push forward then pull LCD up.
2. Take apart TFT BRACKET.

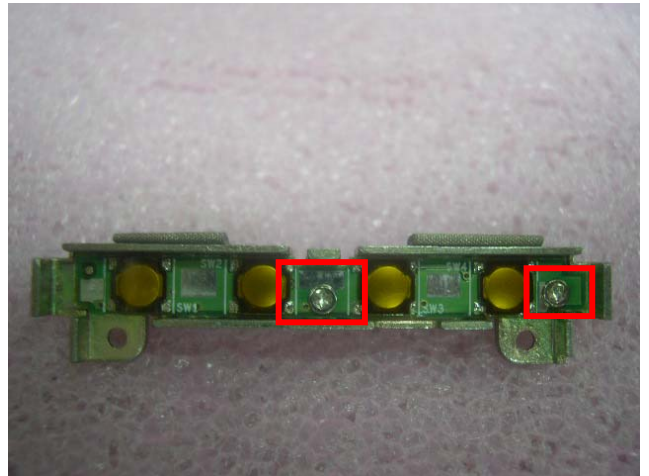




Steps 12:1. Pull up receiver and unload 2 screws from APKEY HOLDER.

2. Take up APKEY HOLDER and unload 2 screws.





Steps 13: Unload the APKEY_BD and MICROPHONE



Steps 14:1. Press HING down by tweezers and push out by left thumb.

2. Remove the cotton then make KEYPAD_FPC separate with C-PART_ASSY



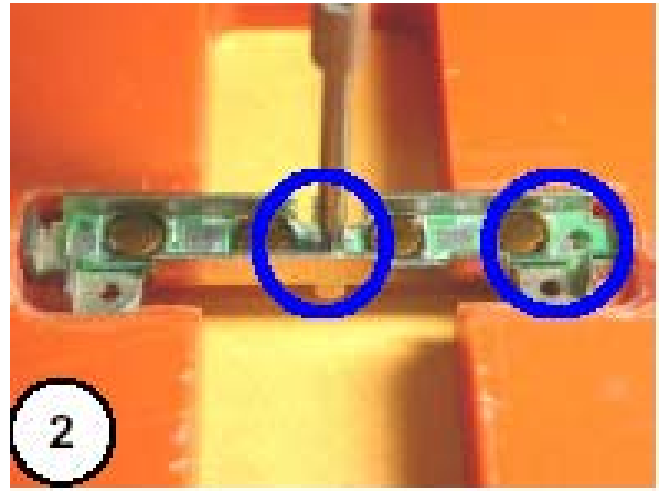
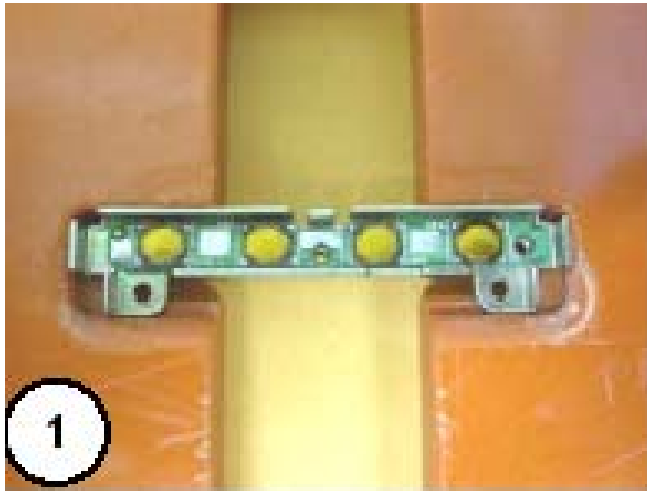
ASUS P505 FABRICATE PROCEDURE-

- Steps 1:
1. Enter the position hole between AP KEY 1, 2 and 3, 4 KEY
 2. Put MICROPHONE into C-PART_ASSY position

Notice: there are 2 position of raised on MICROPHONE RUBBER .it need locate in trough of 2 open holes



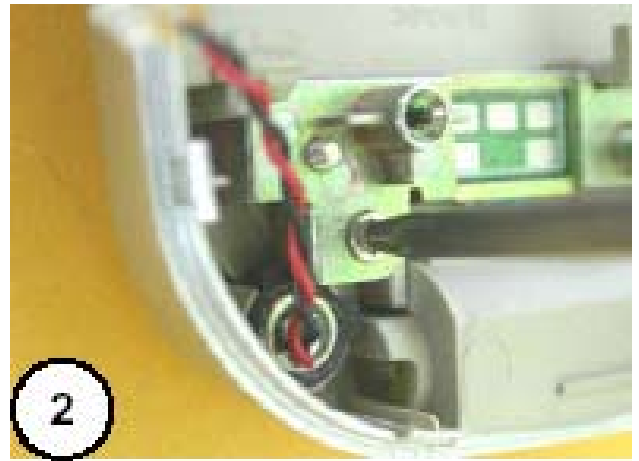
- Steps 2:
1. Put APKEY_BD into APKEY HOLDER.
 2. Fixed 2 SCREWS on AKEY_BD.
 3. Paste 2 PCB ESD GASKET-1 on APKEY. HOLDER.
 4. Ress down whole APKEY HOLDER. Make 3 bolts lock APKEY HOLDER.
 5. Keep the KEYPAD_FPC of KEYPAD_ASSY on APKEY HOLDER.



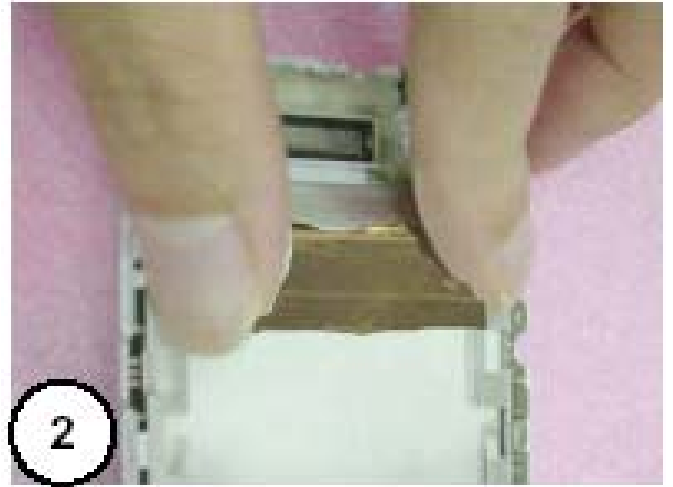
Steps 3:1. Lock 1 SCREW to fixed KEYPAD_FPC
2. Lock 2 SCREW to fixed APKEY HOLDER.

3. try to press APKEY and feeling there have clear paragraph

Notice: the height of 4 APKEY cannot have clear different



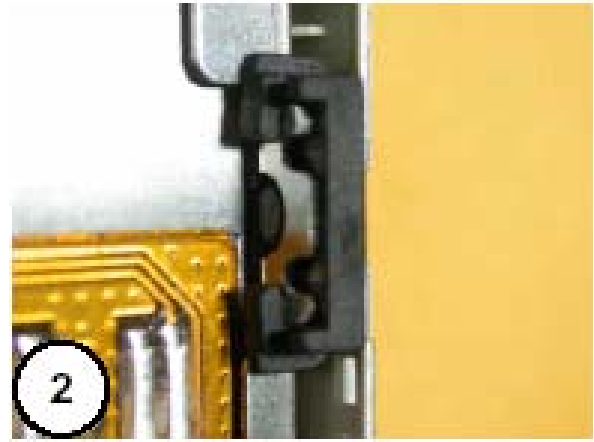
- Steps 4:
1. Wedge into trough by LCD MODULE have FPC side.
 2. Press LCD MODULE into C-PART_ASSY.
 3. Lock 2 SCREW fixed LCD MODULE and paste LCD PROTECT MYLAR.
 4. Remove the paste on RECEIVER BADGE.



Steps 5:1. Take one RESET RUBBER.

2. Sheath the RESET RUBBER from up to down into the fixed slice on TFT BRACKET.

3. To paste TACT SWITCH SPONGE on LCD PANEL left side of VR BUTTON.



Steps 6:1. It is here to fetch a slice of SD-BOARD FPC SPONGE and stick to SDCARD _ CONNECTOR the back of FPC.

2. On MAIN_BD, SDCAD_CONNECTOR black gear of FPC turns on about 90 degrees.

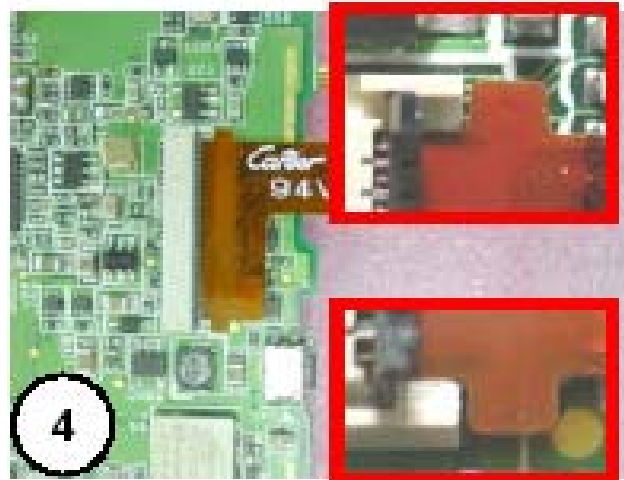
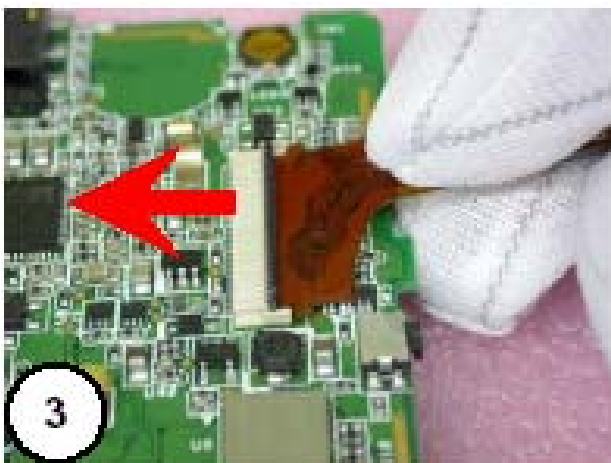
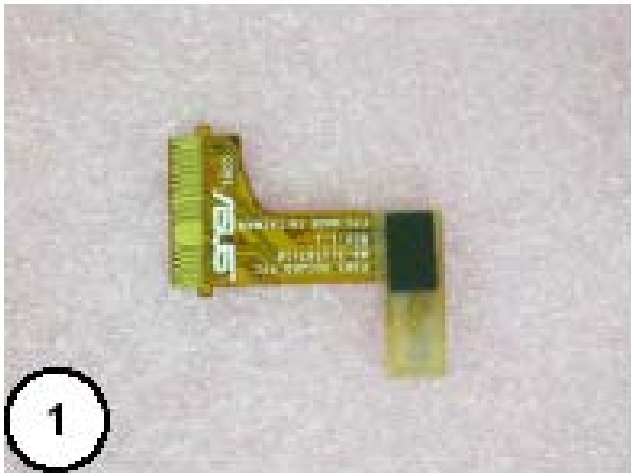
3. Point the gold in the surface down, pack CONNECTOR into, and catch with the finger SDCARD FPC, pushes away in accordance with the shown direction of arrow point in the picture.

Notice: Can't push away up, will cause CONNECTOR damage.

4. Make SDCARD_ CONNECTOR 2 wings of FPC are close.

Notice: Need to do exercises and map 4 and press the black gear that shut CONNECTOR positively

5. Press CONNECTOR black gear to shut

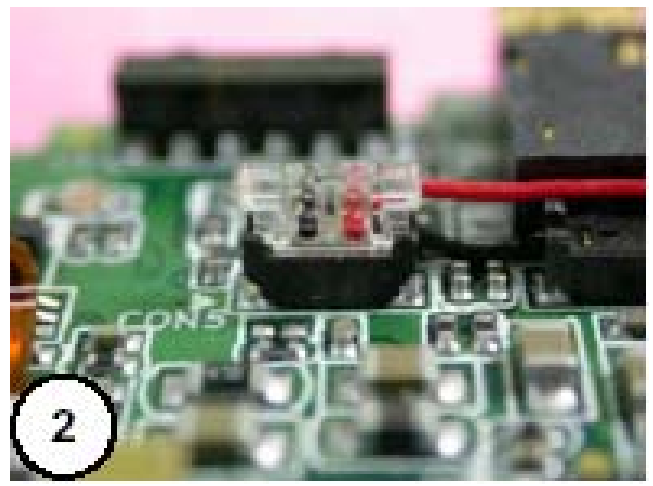
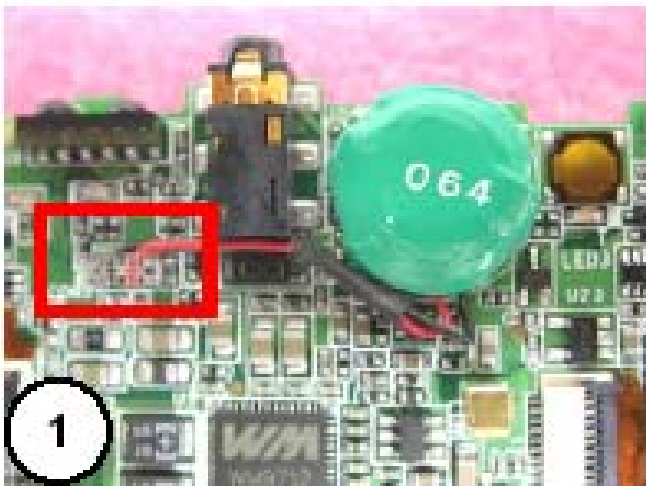


Steps 7:1. Load CONNECTOR of BATT-NI-MH VARTA onto; tear the sticks to the paper and sticks to PHONE JACK right handling.

Notice: The end of a thread of CABLE is towards IR, put CABLE in order and wind from CONNECTOR of RECEIVER.

Notice: Don't insert to CONNECTOR of RECEIVER.

2. Confirm whether BATT CONNECTOR is really inserted.



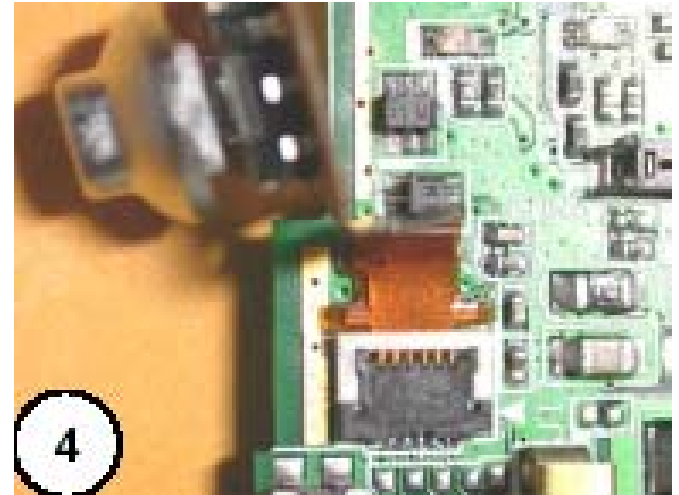
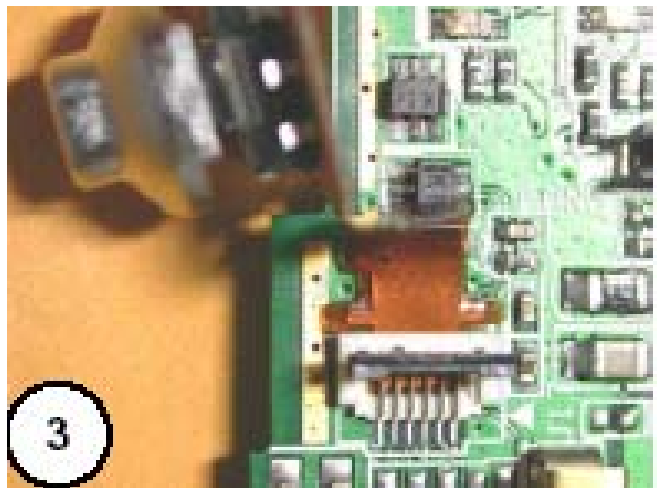
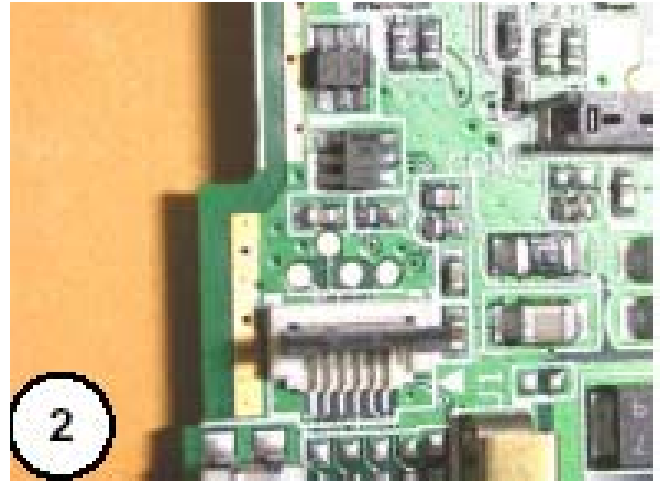
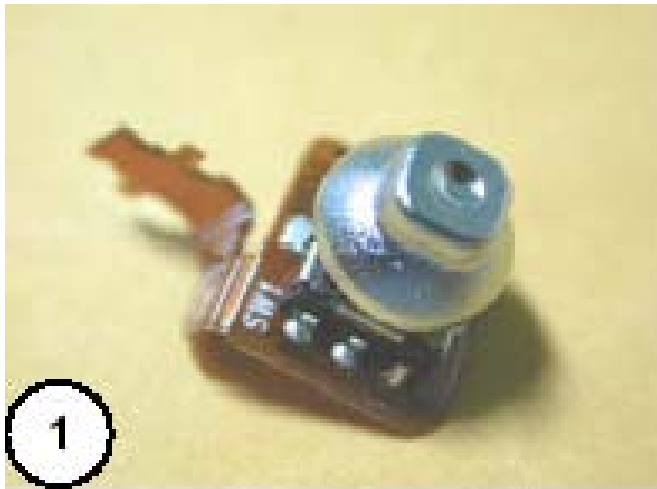
Steps 8:1. CURSORKEY and 6PINFPC combine

2. MAIN_BD CONNECTOR black gear of CONNECTOR of 6PINFPC turns on.

3. Notice: Present about 90 degrees, in order to assemble.

4. Make 2 wings of 6PINFPC close to CONNECTOR.

Notice: Close to 2 wings of FPC CONNECTOR.

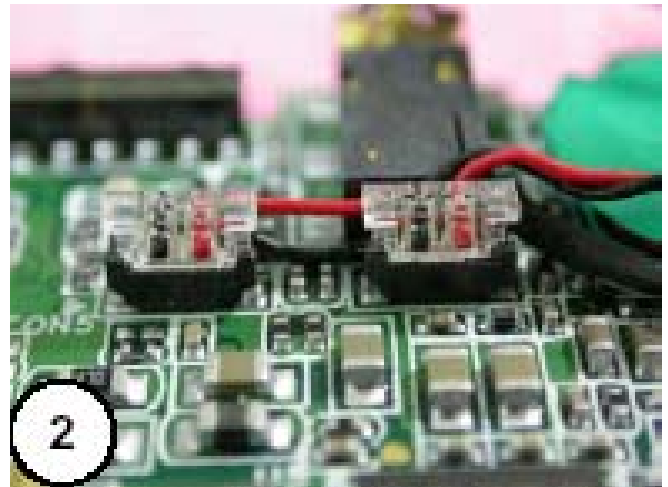
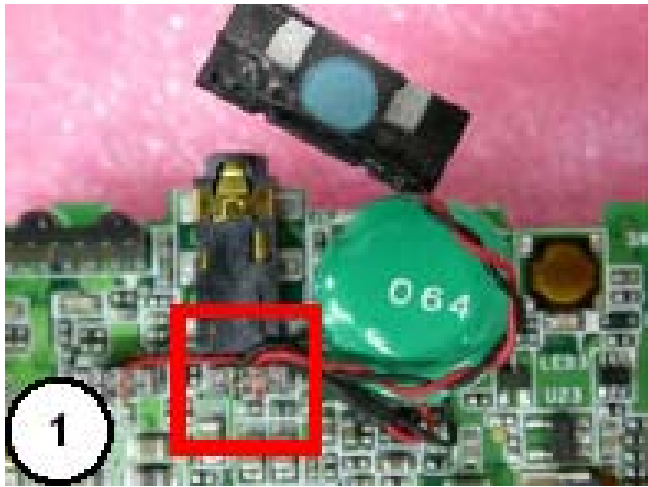


Steps 9:1. Load CONNECTOR of RECEIVER onto.

Notice: The end of a thread of CABLE is towards PHONE JACK

2. Confirm CONNECTOR of RECEIVER is really packed into.

3. First MAIN_BD transfer the other side, and then MAIN_BD rotate 90, make MAIN_BD LCD CONNECTOR on is close to oneself. Push CONNECTOR of LCD aside.



Steps 10:1 Is it fetch to take with left hand, MAIN_BD sets up with C-PART_ASSY presents about 60-90 degrees of ways, inserts FPC of LCD in LCD CONNECTOR first.

2. Push the wing on the right FPC of LCD first with STYLUS, make FPC inserted in CONNECTOR
3. And then push wing of FPC of the left LCD with STYLUS. Make the auxiliary wing of both sides stick to flat CONNECTOR.

Notice: Confirm that auxiliary wing of FPC of LCD needs to stick to flat CONNECTOR.

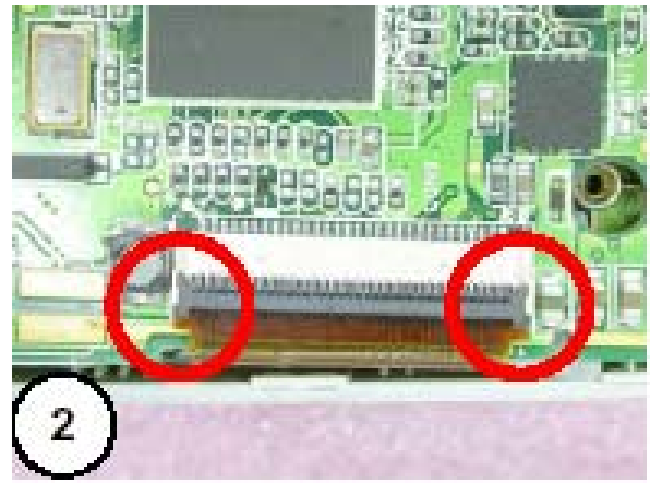
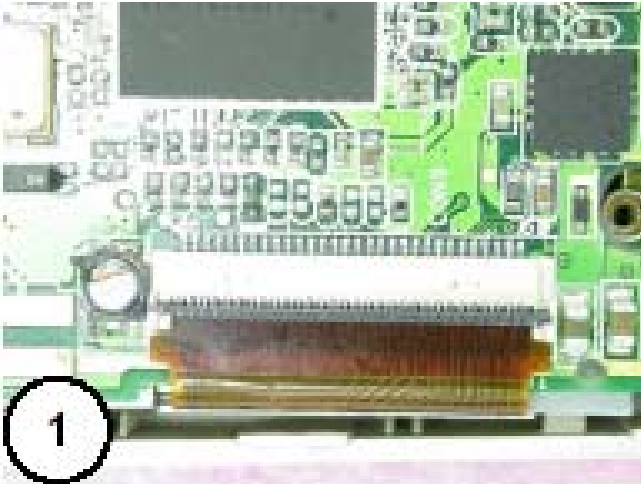


Steps 11:1. Put down the MAIN_BD and depend on it in C-PART_ASSY On.

Notice: Confirm that the auxiliary wing of both sides sticks to flat CONNECTOR

2. Press 2 sides of gear of CONNECTOR first with the finger, press the gear, and prevent the card tendons of 2 sides of gear from breaking away.
3. Fetch about 2 centimeters of heat-resisting

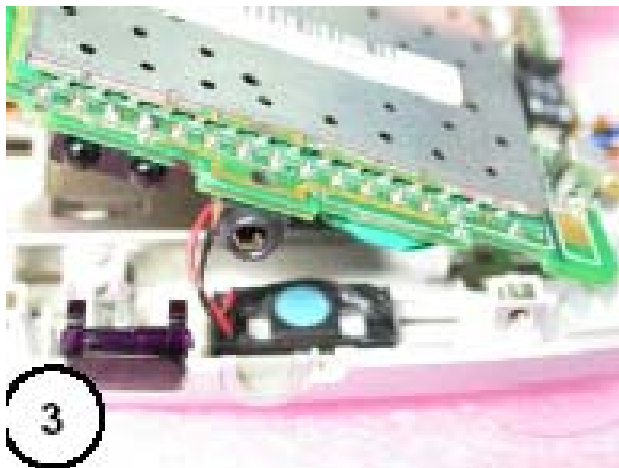
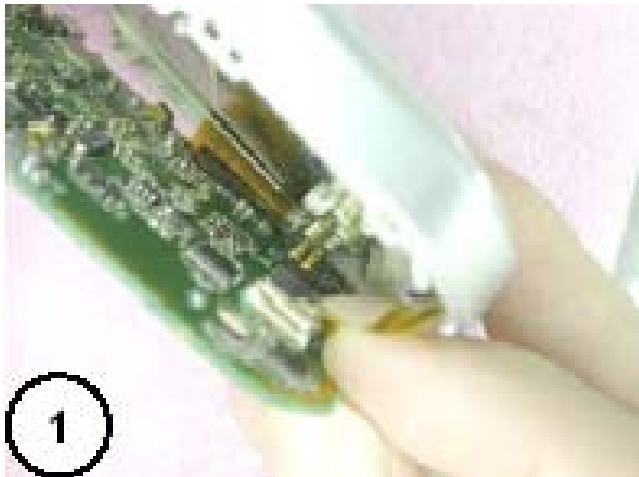
sticky tapes of a length of a film, stick to and attach to CONNECTOR of LCD.



- Steps 12:1. Point it from C-PART_ASSY the bottom is stretched into, assist KEYPAD FPC with the fingertip, and make CONNECTOR on KEYPAD FPC aim at CONNECTOR on MAIN_BD.
2. And then use another hand; stretch into and press lower CONNECTOR by finger.
 3. It to turn machine, make IR face oneself, pay special attention to turning on MAIN_BD

gently, put into RECEIVER and stick in C-PART _ ASSY On RECEIVER BODGE.

4. CONNECTOR and MAIN_BD of MICROPHONE is combined.



Steps 13:1.2 Ribs needing to make the bottom stick to the flat red frame line place while installing MODULE of 6PINFPC.

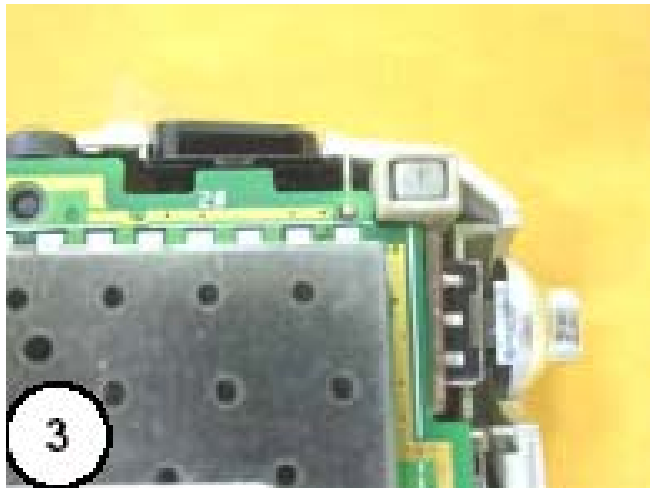
2. 6PINFPC puts into the localization trough.

3. Confirm orienting PIN and crossing the localization hole of MAIN_BD.

4. The lock encloses a SCREW.

5. Locking a SCREW again, the regular form

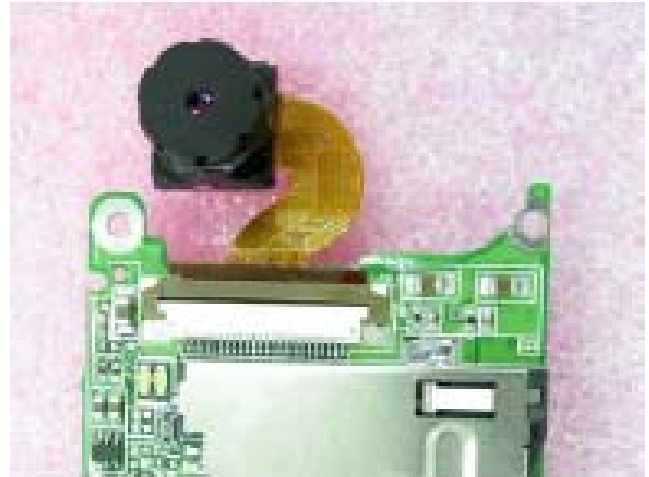
MAIN_BD on TFT BRACKET.



Steps 14:1. Of SD_BD the gear of CAMERA MODULE is turned on.

2. And then insert FPC of CAMERA MODULE smoothly

in the gear and press.



Steps 15:1. SD_BD Slot of SD packs D-PART_ASSY into up, first SD_BD right hand enters the card and colludes.

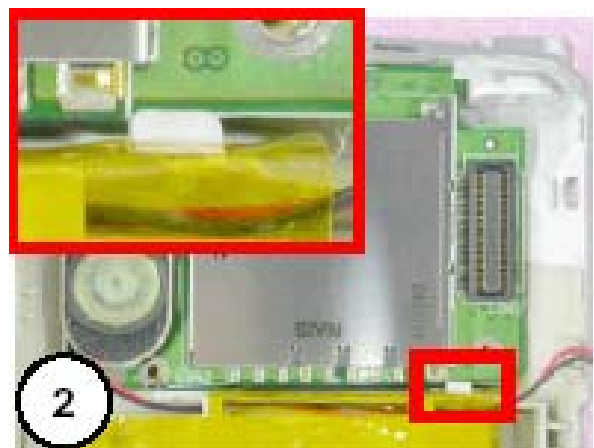
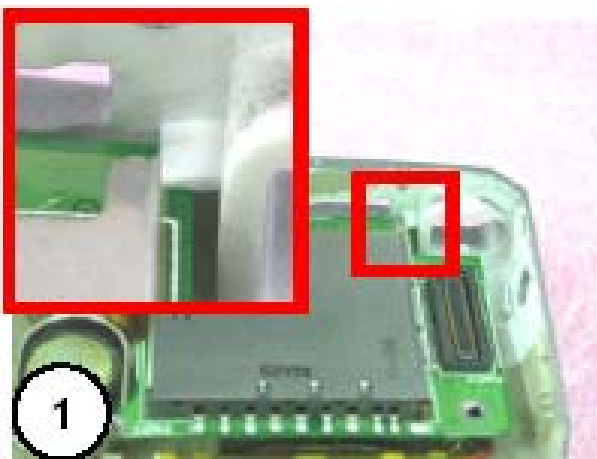
2. And then SD_BD right press, make SD_BD tenon on D-PART_ASSY.

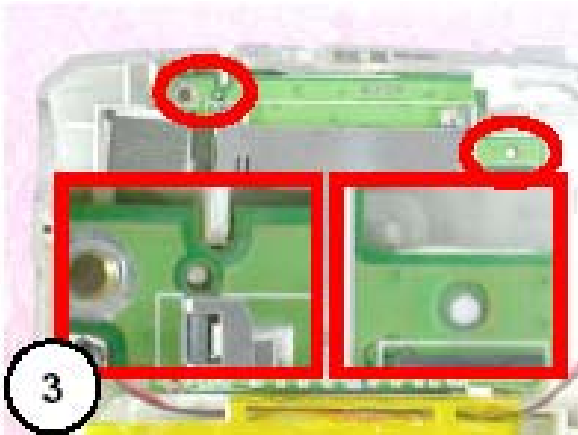
Notice: Orient PIN and really make a reservation

3. Put CAMERA MODULE into trough of CAMERA.

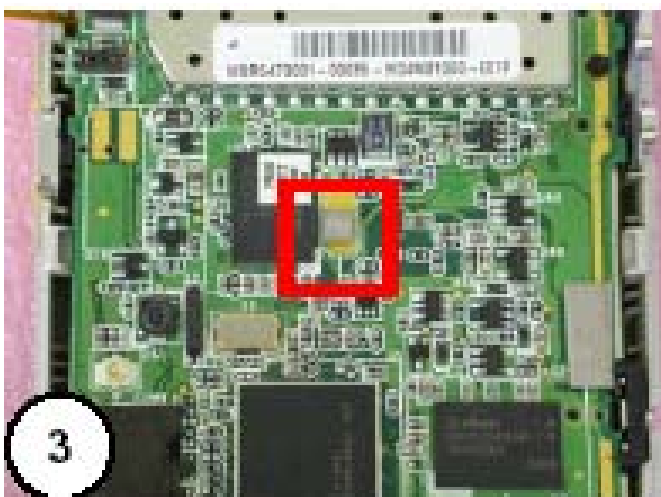
Notice: Can't press and push away the back of CAMERA MODULE

4. Lock 3 Screws.

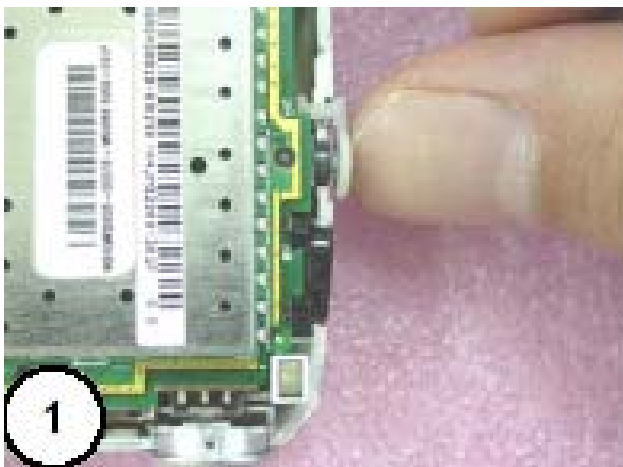


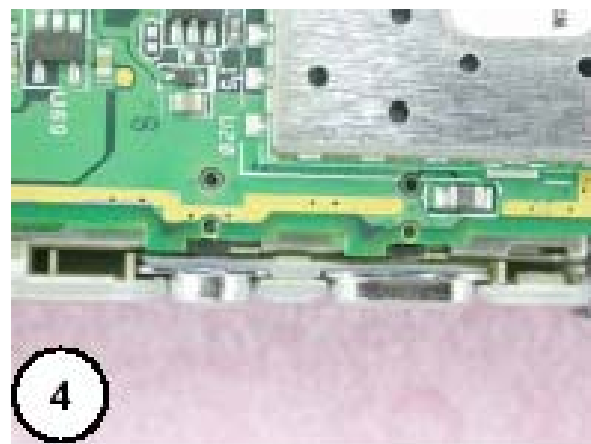


- Steps 16:
1. Take an ANTENNA inserting the aerial hole.
 2. Really insert it finally, confirm that the aerial bottom sticks to flat D-PART _ ASSY.
 3. Stick to a slice of PCB ESD GASKET-2 on MAIN _BD such as the frame.



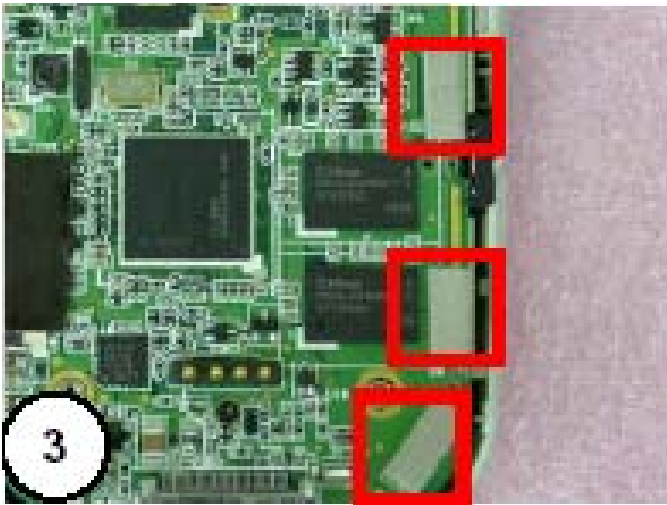
- Steps 17:
1. Take EARPHONE RUBBER in PHONE JACK first
 2. Take one PLATE CURSORKEY, there are the directions of 2 localization holes forward, set at CURSORKEY, and then gently extrapolate, until the fact that PLATE CURSORKEY sink to the trough.
 3. PLATE CURSORKEY pushes inside; make its smooth in C-PART_ASSY.
 4. BUTTON SIDEKEY puts into C-PART_ASSY In BUTTON trough of.
 5. Put into BUTTON RIGHT C-PART_ASSY in the trough, notices directionality, BUTTON RIGHT orientates holes and opens one's mouth greatly down, the opening is small up.





- Steps 18:
1. Put into BUTTON RIGHT C-PART_ASSY in the trough, pay attention to directionality, BUTTON RIGHT orient hole open one's mouth the heavy one down, the opening is small up.
 2. About 2 centimeters of 3Ms and regular BUTTON RIGHT of paper grow to stick.
 3. Stick to 3 slices of PCB ESD GASKET-1 in MAIN_BD





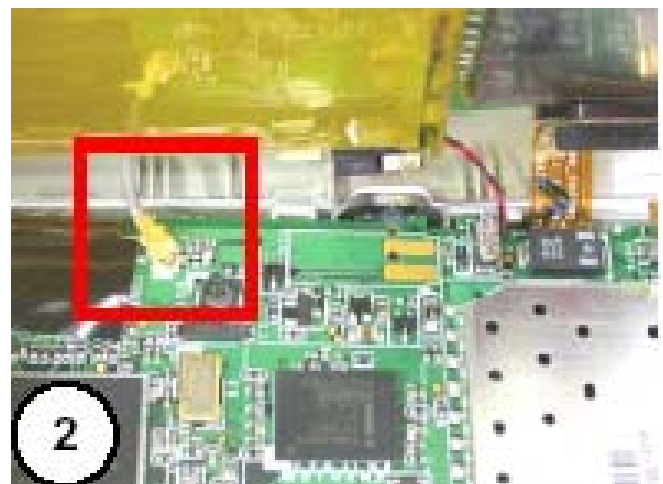
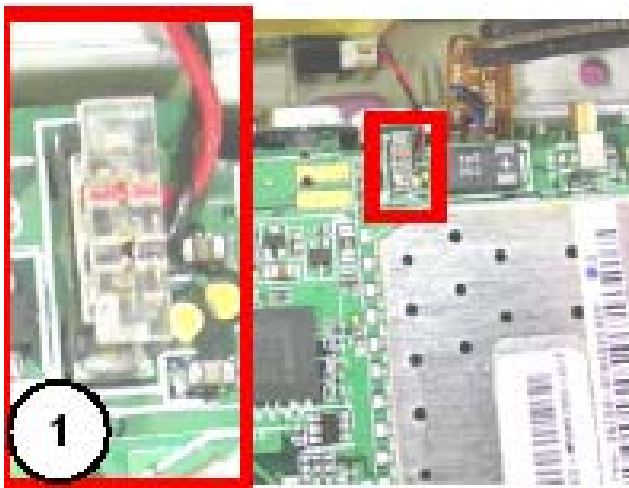
Steps 19: 1. Insert SPEAKER CONNECTOR in MAIN_BD

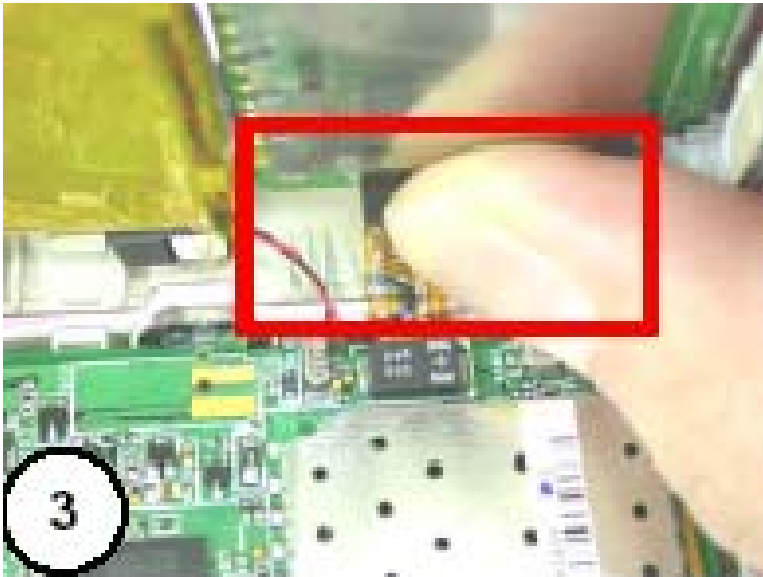
Notice: The thread is towards SDCARD the direction of FPC, avoid interfering with VIBRATOR

2. Install CONNECTOR and MAIN_BD of BLUETOOTH ANTENNA is combined.

Notice: Take towards LCD FPC, is interfere with VIBRATOR to avoid thread at paying attention to lining

3. It is flat with the finger to press SDCARD _FPC enables both sides of CONNECTOR to press SD_BD smooth-glowingly at the same time.





Steps 20:1. D-PART_ASSY is it enter DUCKING set, machine of platform first after covering, set push up after entering, make C-PART_ASSY and D-PART_ASSY card colludes and really combines.

Notice: BATTERY LOCKER is needed in LOCK state

2. Put the general C-PART_ASSY in order and D-PART_ASSY the card is cancelled and pressed one by one.



Steps 21:1. Lock 2 Screws in BATTERY trough.

2. Set up the machine platform straight finally, lock 2 Screws on a top in the machine.

